



COMPLETE SOLUTION FOR

LED LIGHTS



About us

Solar Plus, as a India's leading manufacturer of solar LED lights, has been operating under the ISO9001:2000 quality management system. At the same time, by adopting advanced ERP management system, we guarantee each process from materials selection, design, R&D, production, to sales to be smooth. Since established, we have constantly developed different series of products like all in one solar street lights, solar LED Street lights, LED flood lights, and so on. Varied lights with distinguishing characteristics can be applied to different scenarios and places. Semi integrated & All in one solar street light series is one of our hot selling products. With its all-in-one design, the lighting kits are completely wireless and easy to be mounted, which is user-friendly and can provide the maximized convenience. All our products have been certified with Quality and they are widely accepted by customers from All over India, and so on. Taking all the valuable factors like service life, luminance, energy consumption, we invested heavily in purchasing imported high-power led chips. What's more, we adopt aluminum housing as the shell to ensure good heat emission effect. The characteristics of dustproof, waterproof, and easy installation all help enhance the popularity of our solar LED lights and LED lights.

Certification (An ISO 9001:2015 Certified Company)



CONTENTS

Stadium/Tower LED Lights	
Flood LED Lights	
Street LED Lights	
High Bay / UFO LED Lights	
Solar LED Lights	
Portable Solar LED Lights	
Garden LED Lights	
LED Panel Lights	
Industrial LED Tube Lights	
LED Tube Lights	
Lithium Cells / Battery Packs	
BMS / Solar Controllers	



IP65

Item	Model No.	Power	Input Volt.	LED	No. of LED	Lumens*	Size(mm)	Beam Angle
400W Stadium Flood Light	STADIUMFLOOD400	400W	90-265V	2835 1W	470	40000	420x380x450	120°
800W Stadium Flood Light	STADIUMFLOOD800	800W	90-265V	2835 1W	940	80000	450x450x450	120°

- **SKD, Housing & Spares also available.**



**Slim
Model**



Item	Model No.	Power	Input Volt.	LED	No. of LED	Lumens*	Size (mm)
50W Flood Light	FLSLIM50	50W	90-265V	2835 1W	120	5000	225 x 225 x 50
100W Flood Light	FLSLIM100	100W	90-265V	2835 1W	240	10000	285 x 285 x 65
150W Flood Light	FLSLIM150	150W	90-265V	2835 1W	360	15000	285 x 320 x 80
200W Flood Light	FLSLIM200	200W	90-265V	2835 1W	480	20000	350 x 320 x 80



High Grade Aluminium
Special Diamond Reflector

Item	Model No.	Power	Input Volt.	LED	No. of LED	Lumens*	Size (mm)
30W Flood Light	FLNEW30	32W	90-265V	2835 1W	32	3000	230 x 188 x 120
50W Flood Light	FLNEW50	52W	90-265V	2835 1W	52	5000	287 x 235 x 140
100W Flood Light	FLNEW100	104W	90-265V	2835 1W	104	10000	290 x 265 x 150
150W Flood Light	FLNEW150	156W	90-265V	2835 1W	156	15000	390 x 290 x 125
200W Flood Light	FLNEW200	208W	90-265V	2835 1W	208	20000	412 x 370 x 135

- Available in Cool White, Neutral White, Warm White, Red, Green, Blue, Pink & RGB
- SKD, Housing & Spares also available.



Slim
Model



Item	Model No.	Power	Input Volt.	LED	No. of LED	Lumens*	Size (mm)	Pipe Size
24W Street Light	SPSLIM24	24W	90-265V	2835 1W	30	2400	308 x 125 x 45	40mm
30W Street Light	SPSLIM30	30W	90-265V	2835 1W	30	3000	308 x 125 x 45	40mm
50W Street Light	SPSLIM50	50W	90-265V	2835 1W	50	5000	400 x 140 x 45	40-50mm
100W Street Light	SPSLIM100	100W	90-265V	2835 1W	100	10000	530 x 185 x 50	50-60mm



Glass
Model



Item	Model No.	Power	Input Volt.	LED	No. of LED	Lumens*	Size (mm)	Pipe Size
30W Street Light	SPNEW30	30W	90-265V	2835 1W	32	3000	350 x 180 x 60	40mm
50W Street Light	SPNEW50	50W	90-265V	2835 1W	54	5000	500 x 220 x 70	50mm
100W Street Light	SPNEW100	100W	90-265V	2835 1W	108	10000	720 x 280 x 85	60mm
150W Street Light	SPNEW150	150W	90-265V	2835 1W	162	15000	880 x 350 x 95	60mm
200W Street Light	SPNEW200	200W	90-265V	2835 1W	216	20000	950 x 350 x 95	60mm

- Available in Cool White, Neutral White & Warm White
- SKD, Housing & Spares also available.



**Traditional
Style**

Item	Model No.	Power	Input Volt.	LED	No. of LED	Lumens*	Size (mm)	Dome
50W High Bay Light	HBNEW50	50W	90-265V	2835 1W	60	5000	350 x 260	90°
60W High Bay Light	HBNEW60	60W	90-265V	2835 1W	60	6000	350 x 260	90°
100W High Bay Light	HBNEW100	100W	90-265V	2835 1W	120	10000	450 x 320	90°/120°
120W High Bay Light	HBNEW120	120W	90-265V	2835 1W	120	12000	450 x 320	90°/120°
150W High Bay Light	HBNEW150	150W	90-265V	2835 1W	180	15000	450 x 320	90°/120°
180W High Bay Light	HBNEW180	180W	90-265V	2835 1W	180	18000	450 x 320	90°/120°



Item	Model No.	Power	Input Volt.	LED	No. of LED	Lumens*	Size(mm)	Beam Angle
100W UFO High Bay Light	HB 100	100W	90-265V	2835 1W	140	10000	315 x 150	120°
150W UFO High Bay Light	HB 150	150W	90-265V	2835 1W	210	15000	330 x 170	120°
200W UFO High Bay Light	HB 200	200W	90-265V	2835 1W	280	20000	455 x 220	120°

- **Available in Cool White, Neutral White & Warm White.**
- **SKD, Housing & Spares also available.**



LED SOLAR HIGH MAST LIGHT

AS PER
MNRE
SPECIFICATIONS



SPECIFICATIONS

MODEL	SLHIMAST100	SLHIMAST150	SLHIMAST200
POWER	100W	150W	200W
NO. OF LIGHTS	5	5	5
BATTERY	LiFePo4 12.8V 102Ah (42+60)	LiFePo4 12.8V 150Ah (30Ah x 5)	LiFePo4 12.8V 210Ah (42Ah x 5)
SOLAR PANEL	18V 100W + 160W	18V 160W + 160W	18V 200W + 200W
BATTERY TYPE	EXTERNAL (IP65 ALUMINIUM)	IN-BUILT (IP65 ALUMINIUM)	IN-BUILT (IP65 ALUMINIUM)
CHARGING TIME	7-8 Hours	7-8 Hours	7-8 Hours
WORKING MODE	0-6Hrs 100% 7-12Hrs 50%	0-6Hrs 100% 7-12Hrs 50%	0-6Hrs 100% 7-12Hrs 50%
BACKUP TIME	≤ 2 Nights	≤ 2 Nights	≤ 2 Nights

We Provide Customized Solutions For Projects



LED SOLAR STREET LIGHT

AS PER
MNRE
SPECIFICATIONS



SPECIFICATIONS				SPECIFICATIONS	
MODEL	SLMNRE15	SLMNRE20	SLMNRE30	SLINTMNRE30	SLINTMNRE40
POWER	15W	20W	30W	30W	40W
CONTROLLER TYPE	MPPT	MPPT	MPPT	MPPT	MPPT
BATTERY	LiFePo4 12.8V 18Ah	LiFePo4 12.8V 24h	LiFePo4 12.8V 30Ah	LiFePo4 12.8V 30Ah	LiFePo4 12.8V 36Ah
SOLAR PANEL	18V 40W	18V 60W	18V 75W	18V 75W	18V 75W
BATTERY TYPE	EXTERNAL (IP65 ALUMINIUM)			IN-BUILT (IP65 ALUMINIUM)	
CHARGING TIME	7-8 Hours			7-8 Hours	
WORKING MODE	0-6Hrs 100% 7-12Hrs 50%			0-6Hrs 100% 7-12Hrs 50%	
BACKUP TIME	≤ 2 Nights			≤ 2 Nights	

We Provide Customized Solutions For Projects



With Remote



SOLAR STREET LIGHT 30W	SOLAR FLOOD LIGHT 20W	SOLAR FLOOD LIGHT 30W
CODE : SLSOLARINT30	CODE: FLSOLARINT20	CODE: FLSOLARINT30
432 LED 5730 EPISTAR	120 LED 1W EPISTAR	182 LED 1W EPISTAR
LED POWER:200W	LED POWER: 100W	LED POWER: 150W
PANEL: 5V 30W POLY	PANEL: 5V 20W POLY	PANEL: 5V 30W POLY
BATTERY: 3.2V 30Ah LiFePo4	BATTERY: 3.2V 20A LiFePo4	BATTERY: 3.2V 30A LiFePo4
	CHARGING TIME : 6-8HRS	
	LIGHTING TIME : 12HRS	
	BEAM ANGLE : 120°	
Remote:		
<ul style="list-style-type: none"> • Auto: 100% lighting up at the first 20mins, 70% for 4.5hrs and 30% for remaining hours : Light on and of (no working for light Sensor) • 3H: Set up for 3 hours lighting up, after 3 hours light of • 5H: Set up for 5 hours lighting up, after 5 hours light of • 8H: Set up for 8 hours lighting up, after 8 hours light of • Half light: Set up for 50% lighting up Full light: Set up for 100% lighting up 		
FOR OUTDOOR APPLICATION		



	20W SP DESIGN	24W SP DESIGN	30W SP DESIGN
LED POWER	20W	24 W	30W
SOLAR PANEL	12V 60W	12V 60W	12V 80W
BATTERY	12.8V 24AH LiFePo4	12.8V 24AH LiFePo4	12.8V 30AH LiFePo4
CHARGING TIME	7-8 Hrs	7-8 Hrs	7-8 Hrs
LIGHTING TIME*	2 Nights	2 Nights	2 Nights



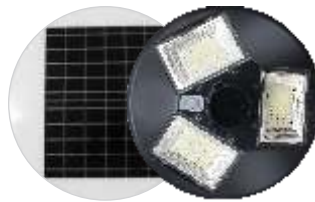
SPECIFICATIONS

MODEL	EMSOLARFL50	EMSOLARFL100
LED POWER	50W	100W
NO. OF LED	5730 110Pc	5730 180Pc
BATTERY	LiFePo4 3.2V 10Ah	LiFePo4 3.2V 15Ah
SOLAR PANEL	5V 7W	5V 10W
LIGHT MODES	4 Modes High/Medium/Low/Warning Light	
CHARGING	2 Modes Solar/USB	
FUNCTION	USB Output Works as Power Bank	
BACKUP TIME *	1 Day	1 Day

* Backup Time calculated will vary according to lighting modes



CAN BE USED
AS GATE LIGHT



25W LENS MODEL	
MODEL	GARDENSOLAR15R
LED	240 LED 5730 EPISTAR
LED POWER	120W
SOLAR PANEL	5V 15W
BATTERY	3.2V 15Ah LiFePo4
CHARGING TIME	7-8 Hrs
LIGHTING TIME*	2-3 Night
SENSOR	<ul style="list-style-type: none"> • Optically 10% brightness at the • Radar sensor 100% brightness • 15% brightness if no movement for 30 sec • Keep on 15% brightness if no movement

* Lighting Time calculated is with sensor in Ideal Condition

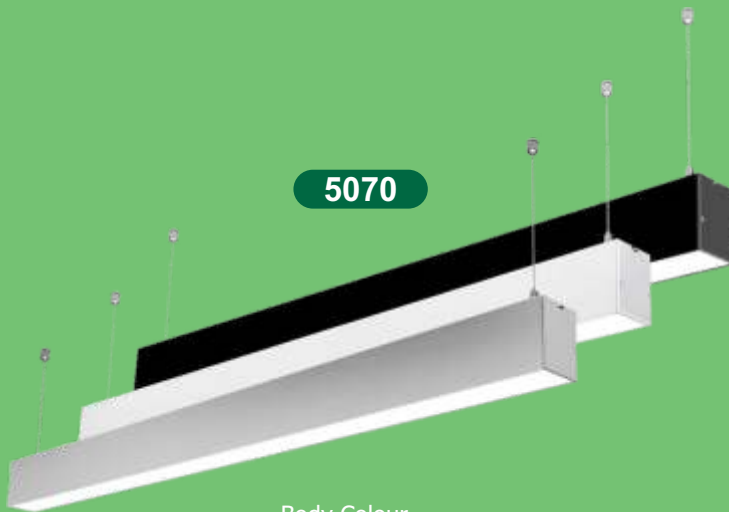
3382



**HANGING
PROFILE**



5070



**CONCEALED
PROFILE**

3250



Body Colour
Black, Silver & White
Size Available : 1Ft. to 12Ft.

Body Colour
Silver

Item	Model No.	Power	Input Volt.	LED	No. of LED	Size (mm)
45W Hanging Profile 3382 9REF	SVT-D3382-45W9R	45W	90-265V	3030	45	33*82*1200
36W Hanging Profile 3382 9REF 2PC	SVT-D3382-36W3R2PC	36W	90-265V	3030/2835	15/120	33*82*1200
36W Hanging Linear Profile 5070	SVT-D5070-36W	36W	90-265V	2835	192	50*70*1200
48W Hanging Linear Profile 5070	SVT-D5070-48W	48W	90-265V	2835	240	50*70*1200
36W Concealed Profile 3250	SVT-C3250-36W	36W	90-265V	2835	192	32*50*1200
48W Concealed Profile 3250	SVT-C3250-48W	48W	90-265V	2835	240	32*50*1200

- Available in Cool White, Neutral White & Warm White.
- SKD, Housing & Spares also available.



Side-Lit
Type



Back-Lit
Type



Surface
Type

2x2 Commercial Ceiling Panel Light

Type	Model No.	Power	Size (mm)	Height (mm)	LED	No. of LED	Lumens*	Input Voltage
Side-Lit	SLP20240W	40W	600 x 600	10.5	2835	200 Pcs. 0.2W	≥ 3600	90-265V
Back-Lit	BLP20248W	48W	600 x 600	30	2835	48 Pcs. 1.5W	≥ 4400	90-265V

AVAILABLE IN SURFACE MOUNT ALSO

- Available in Cool White, Neutral White & Warm White.
- SKD, Housing & Spares also available.

Aluminium Slim



Recessed Round

Item	Model No.	Power	Input Volt.	Outer Size (mm)	Hole Size (mm)	No. of LED	Lumens*	CRI
3W Panel Light	SDL03AL	3W	90-265V	85 x 14	Φ 70	15	300	>75
6W Panel Light	SDL06AL	6W	90-265V	120 x 14	Φ 100	30	600	>75
9W Panel Light	SDL09AL	9W	90-265V	120 x 14	Φ 100	45	900	>75
12W Panel Light	SDL12AL	12W	90-265V	165 x 14	Φ 150	60	1200	>75
15W Panel Light	SDL15AL	15W	90-265V	165 x 14	Φ 150	75	1500	>75
20W Panel Light	SDL20AL	20W	90-265V	225 x 14	Φ 200	100	2000	>75
24W Panel Light	SDL24AL	24W	90-265V	300 x 14	Φ 275	120	2400	>75

Recessed Square

Item	Model No.	Power	Input Volt.	Outer Size (mm)	Hole Size (mm)	No. of LED	Lumens*	CRI
3W Panel Light	SDL03ALSQ	3W	90-265V	85 x 85 x 14	70 x 70	15	300	>75
6W Panel Light	SDL06ALSQ	6W	90-265V	120 x 120 x 14	100 x 100	30	600	>75
9W Panel Light	SDL09ALSQ	9W	90-265V	120 x 120 x 14	100 x 100	45	900	>75
12W Panel Light	SDL12ALSQ	12W	90-265V	165 x 165 x 14	150 x 150	60	1200	>75
15W Panel Light	SDL15ALSQ	15W	90-265V	165 x 165 x 14	150 x 150	75	1500	>75
20W Panel Light	SDL20ALSQ	20W	90-265V	225 x 225 x 14	200 x 200	100	2000	>75
24W Panel Light	SDL24ALSQ	24W	90-265V	300 x 300 x 14	275 x 275	120	2400	>75

• Surface Mount Available from 6W-24W

Aluminium Trim



Recessed Round

Item	Model No.	Power	Input Volt.	Outer Size (mm)	Hole Size (mm)	No. of LED	Lumens*	CRI
9W TRIM Panel Light	TRDL09	9W	90-265V	Φ 130	Φ 105	45	900	>75
15W TRIM Panel Light	TRDL15	15W	90-265V	Φ 170	Φ 155	75	1500	>75
20W TRIM Panel Light	TRDL20	20W	90-265V	Φ 225	Φ 205	100	2000	>75

Recessed Square

Item	Model No.	Power	Input Volt.	Outer Size (mm)	Hole Size (mm)	No. of LED	Lumens*	CRI
9W TRIM Panel Light	TRDL09SQ	9W	90-265V	Φ 130	Φ 105	45	900	>75
15W TRIM Panel Light	TRDL15SQ	15W	90-265V	Φ 170	Φ 155	75	1500	>75
20W TRIM Panel Light	TRDL20SQ	20W	90-265V	Φ 225	Φ 205	100	2000	>75

• Available in Cool White, Neutral White & Warm White.

• SKD, Housing & Spares also available.

ALL PANEL LIGHTS
AVAILABLE WITH MOTION SENSORS ALSO



IP65 TRIPROOF TUBES



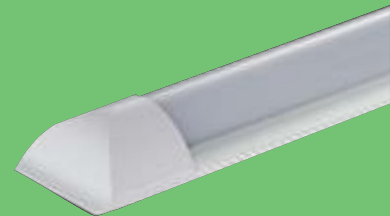
Sizes	: 1ft, 2ft, 3ft & 4ft
Wattage	: 10W-36W
Input Voltage	: 90-265V
Power Factor	: >0.95
LED	: 2835



SPECIAL INDUSTRIAL HIGH POWER TUBES



O ce Slim Light - TL4FOLL



O ce Flat Light - TL4FFLAT



T5 Single Reflector - TL4FWT5SR



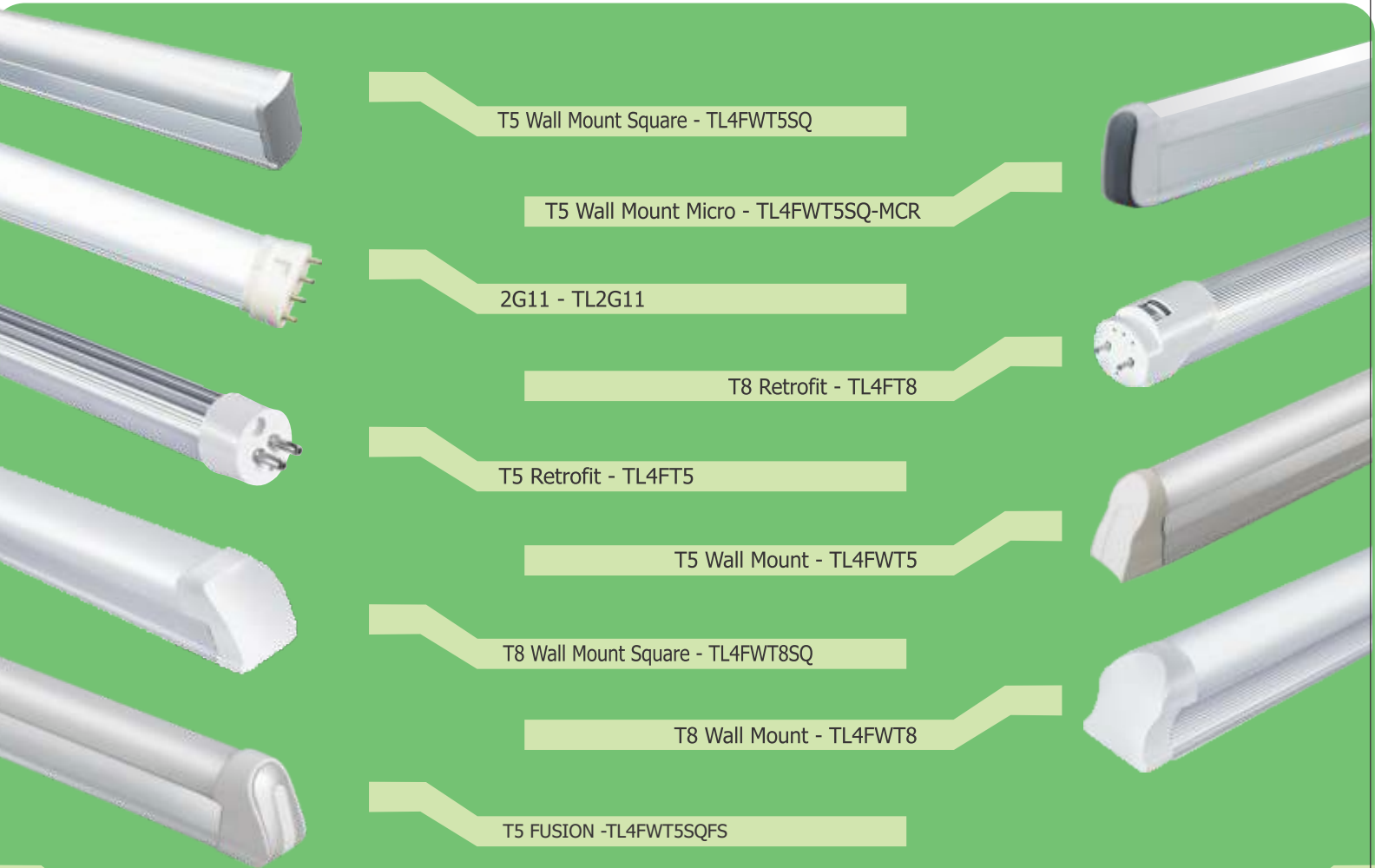
T5 Double Reflector - TL4FWT5DR



T8 Wall Mount Square - TL4FWT8SQ

Sizes	: 1ft, 2ft, 3ft & 4ft
Wattage	: 5W-56W
Input Voltage	: 90-265V
Power Factor	: >0.95
LED	: 2835

- Available in Cool White, Neutral White & Warm White.
- SKD, Housing & Spares also available.



T5 Wall Mount Square - TL4FWT5SQ

T5 Wall Mount Micro - TL4FWT5SQ-MCR

2G11 - TL2G11

T8 Retrofit - TL4FT8

T5 Retrofit - TL4FT5

T5 Wall Mount - TL4FWT5

T8 Wall Mount Square - TL4FWT8SQ

T8 Wall Mount - TL4FWT8

T5 FUSION - TL4FWT5SQFS

Sizes	:	1ft, 2ft, 3ft & 4ft
Wattage	:	5W-28W
Input Voltage	:	90-265V
Power Factor	:	>0.95
LED	:	2835



MOTION SENSOR SMART LIGHTING

T8 Wall Mount - TL4FWT8RD

T8 Retrofit - TL4FT8RD

Sizes	:	2ft & 4ft
Wattage	:	9W - 18W
Input Voltage	:	90-265V
Power Factor	:	>0.95
LED	:	2835

- Available in Cool White, Neutral White & Warm White.
- SKD, Housing & Spares also available.

Lithium-ion & LiFePo4 Battery Cell



Model	Capacity (mAh)	Voltage	Charge - Discharge	Maximum Discharge Current
18650	1200	3.7V	4.2-3.0	1C
18650	1500	3.7V	4.2-3.0	1C
18650	1800	3.7V	4.2-3.0	1C
18650	2000	3.7V	4.2-3.0	1C
18650	2200	3.7V	4.2-3.0	1C
32650	6000	3.2V	3.65-2.75	1C, 3C



**Customized
Battery Packs
Available**

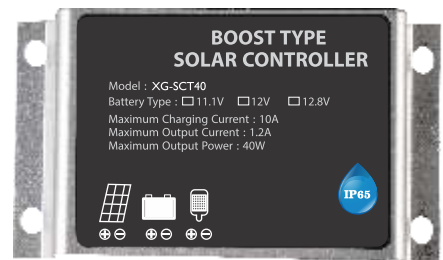
• 3.2V • 3.7V • 6.4V • 7.4V • 11.1V • 12.8V • 14.4V • 25.6V

Battery Management System (BMS)

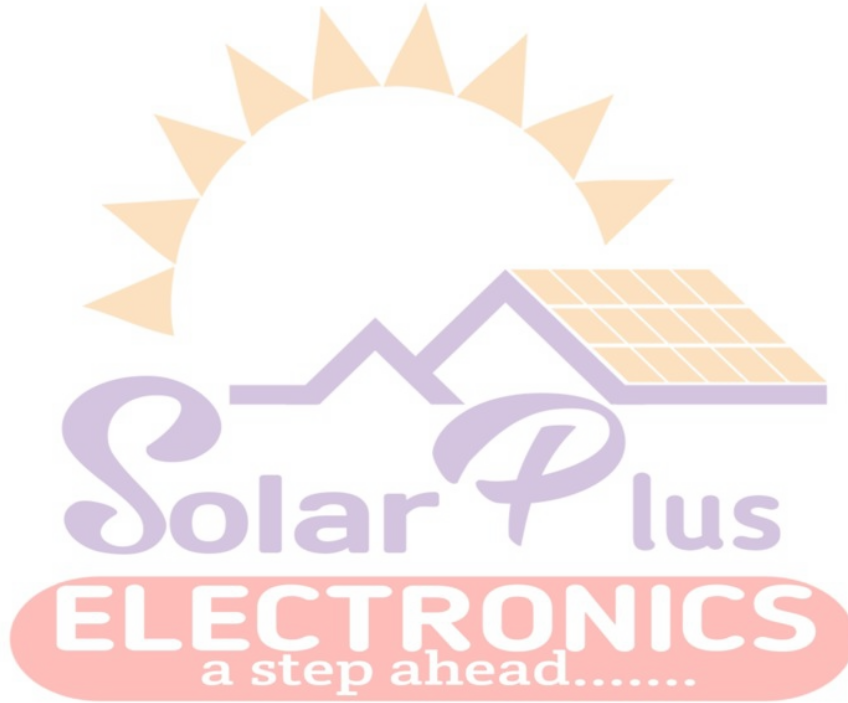


Model	Battery(Volt.)	Series	Maximum Current(A)	Over Discharge(Volt.)	Over Charge(Volt.)
XGBMS-3.7V1.5A	3.7 V	1S	1.5A	2.7 V	4.25 V
XGBMS-3.2V5A	3.2 V	1S	5A	2.1 V	3.75 V
XGBMS-6.4V6A	6.4 V	2S	6A	2.1 V	3.75 V
XGBMS-7.4V5A	7.4 V	2S	5A	2.7 V	4.25 V
XGBMS-11.1V10A	11.1 V	3S	10A	2.7 V	4.25 V
XGBMS-12.8V5A	12.8 V	4S	5A	2.1 V	3.75 V
XGBMS-12.8V10A	12.8 V	4S	10A	2.1 V	3.75 V
XGBMS-12.8V15A	12.8 V	4S	15A	2.1 V	3.75 V
XGBMS-12.8V25A	12.8 V	4S	25A	2.1 V	3.75 V
XGBMS-25.6V15A	25.6 V	8S	15A	2.1 V	3.75 V
XGBMS-48V15A	48 V	13S	15 A	2.7 V	4.25 V
XGBMS-48V16S25A	48 V	16S	25 A	2.1 V	3.75 V

SOLAR CONTROLLER



MODEL NO.	XG-SCT30	XG-SCT40
Battery Type	9.6V/11.1V/12V/12.8V	11.1V/12V/12.8V
Maximum Charging Current	8A	10A
Maximum Output Power	30W	40W
Output Voltage	24-40V	21-45V
Ef	95%	95%
Output Current	0.1-0.9A (Programmable)	0.1-1.2A (Programmable)
Working Modes	Automatic/Indction/Light Control/Manual	
Automatic Modes	5 Different Time Settings (Programmable)	
Size(mm)	82x45x22	84x64x22



MSME

MICRO, SMALL & MEDIUM ENTERPRISES
सूक्ष्म, लघु एवं मध्यम उद्यम
OUR STRENGTH • हमारी शक्ति

Ministry of MSME, Govt. of India



GeM
Government
e Marketplace

Efficient • Transparent • Inclusive



SOLARPLUS ELECTRONICS

BRANCH OFFICE. 1ST FLOOR NEAR CEAT TYRES SEC-101 NOIDA

**HEAD OFFICE. MOMRAJ NAGAR NEAR BATA DHARAM KATA,
MEERUT ROAD (GHAZIABAD)**

WWW.SOLARPLUSELECTRONICS.COM